

CERTIFIED LAND CORNER RECORDATION

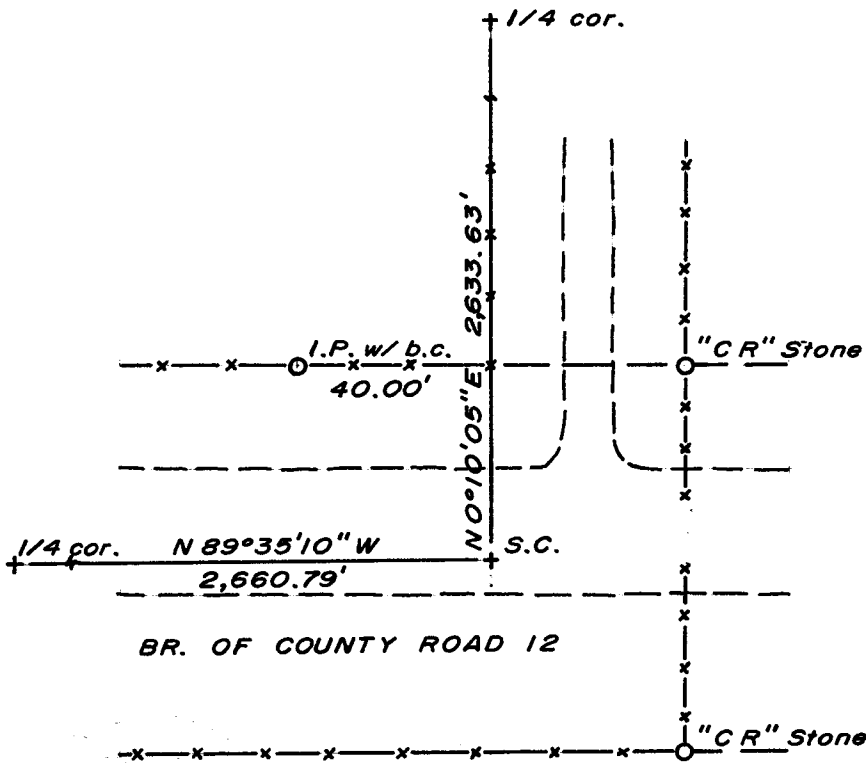
DESCRIPTION OF CORNER EVIDENCE FOUND, AND ORIGINAL RECORD (If known)

LOCATION Found "C R" stones, in place, NE'ly and SE'ly of corner location.
 S.26 S.25 G.L.O. record - Granite Boulder, 17 x 10 x 8; John B. Thomas, 1870.
 S.35 S.36
 T.15N., R.67W.
 6th P.M.

DESCRIPTION OF MONUMENT AND ACCESSORIES ESTABLISHED TO PERPETUATE THE ORIGINAL LOCATION OF THIS CORNER:

At the corner: No monument set.
 Accessories: A 1 1/2" dia. x 30" long iron pipe (concrete-filled) with brass cap bears N 0°10'05" E, 40.00 feet thence N 89°35'10" W, 40.00 feet distant as shown on sketch.
 "C R" stones bear N 45°02' E, 56.57' and S 44°39' E, 56.57' from corner.

SKETCH, WITH COURSE AND DISTANCE TO ADJACENT CORNER IF DETERMINED IN THIS SURVEY.
 (May Sketch or Paste Reproduction on Reverse Side.)



Brass cap set 4" above ground.
 Brass cap stamped:
 C. R. R/W
 LS 519 1974

I, R.L. Hudson certify that I have carefully performed or reviewed the work done on the diagrammed corner as reported on this recordation form and approve the same.

R.L. Hudson Wyoming L.S. No. 519
 Signature of Surveyor Registration No.

STATE OF WYOMING,
 Office of Clerk and Recorder,
 County of Saraville

This "corner record" was filed for record on the 24 day of June, 1974, was noted on the cross-index plat and is assigned page No. _____, in book No. _____.

John B. Huismann
 County Official

| | | | |
|----------------------------|--------------|--------------|---------------|
| Cross Index No. <u>V21</u> | T. <u>15</u> | R. <u>67</u> | <u>6</u> Mer. |
| _____ | T. _____ | R. _____ | Mer. |
| _____ | T. _____ | R. _____ | Mer. |
| _____ | T. _____ | R. _____ | Mer. |
| _____ | T. _____ | R. _____ | Mer. |
| _____ | T. _____ | R. _____ | Mer. |
| _____ | T. _____ | R. _____ | Mer. |

327593

Photographed ✓

Indexed FB

Posted ✓

Assessor ✓

The State of Wyoming } ss
County of Laramie

This instrument was filed for recording
at 1051 o'clock A M. on the
24 day of June
A. D. 19 24 and duly recorded in
Book on page

John B. Williams

County Clerk & Ex-Officio Register of Deeds
By JB Deputy